

AECOM
 PROJECT
 Stallingborough CCGT
 CCP Project

CLIENT
RWE

CONSULTANT
 AECOM Limited
 100 Embankment
 Cathedral Approach
 Manchester, M3 7FB
 www.aecom.com

LEGEND

- The Site
- Transport Route From the Port of Immingham

Indices of Multiple Deprivation (2019)

- 1 (Most Deprived Decile)
- 2
- 3
- 4
- 5
- 6
- 7
- 8
- 9
- 10 (Least Deprived Decile)

NOTES

Published using the Open Government License (OGL) version 3.0.
 Reproduced from Ordnance Survey digital map data © Crown copyright 2023. All rights reserved. Licence number 0100031673.

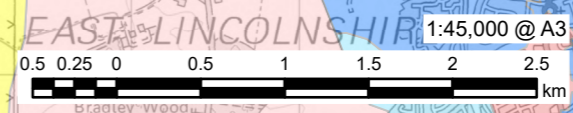
ISSUE PURPOSE
 EIA Scoping Report

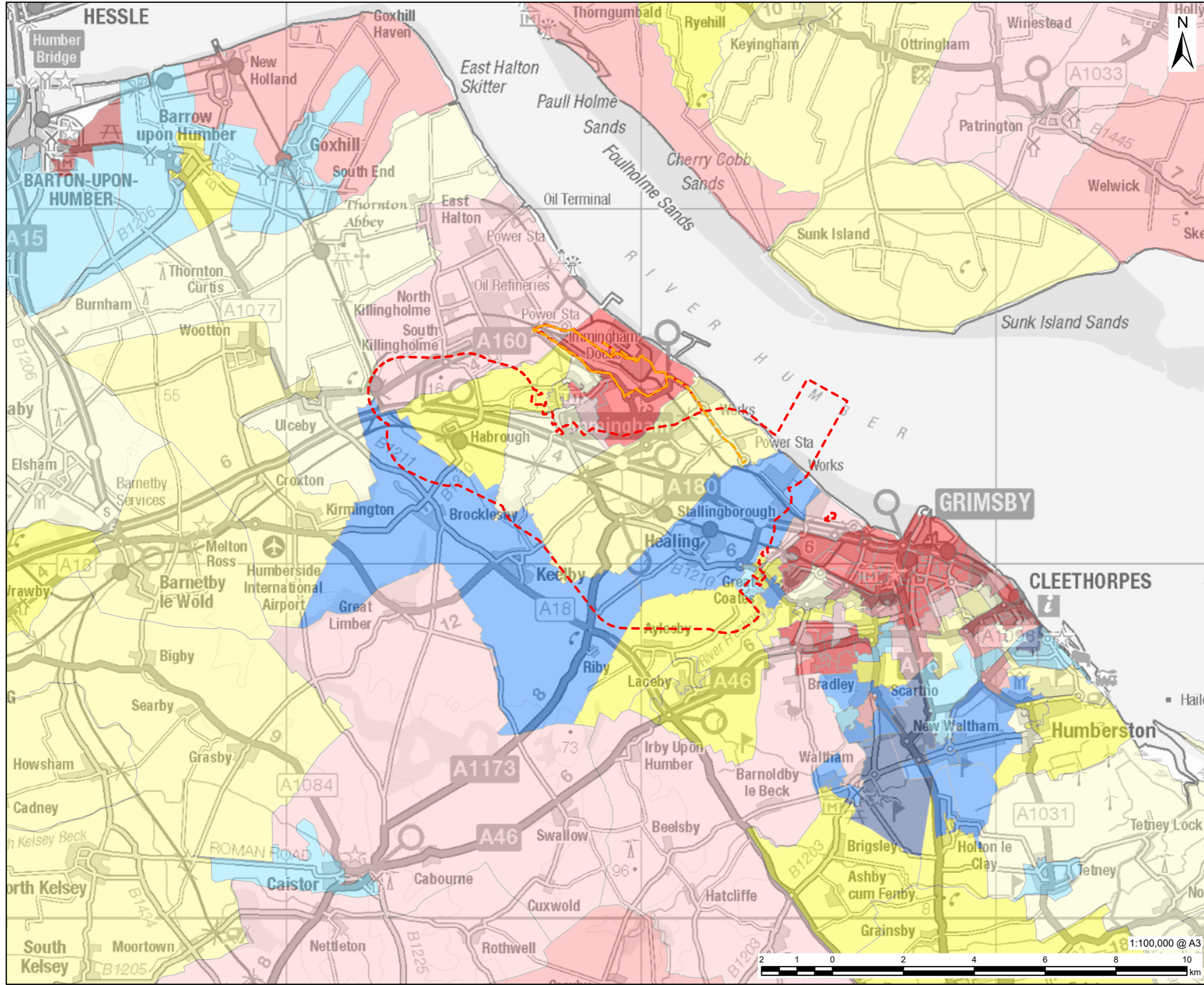
PROJECT NUMBER
 60714932

FIGURE TITLE
 Study Area Deprivation

FIGURE NUMBER
 Figure 6A

This drawing has been prepared for the use of AECOM's client. It may not be used, modified, reproduced or relied upon by third parties, except as agreed by AECOM or as required by law. AECOM accepts no responsibility, and denies any liability whatsoever, to any party that uses or relies on this drawing without AECOM's express written consent. Do not scale this document. All measurements must be obtained from the stated dimensions.





AECOM
 PROJECT
 Stallingborough CCGT
 CCP Project

CLIENT
RWE

CONSULTANT
 AECOM Limited
 100 Embankment
 Cathedral Approach
 Manchester, M3 7FB
 www.aecom.com

LEGEND

- The Site
- Transport Route From the Port of Immingham

Indices of Multiple Deprivation (2019)

- 1 (Most Deprived Decile)
- 2
- 3
- 4
- 5
- 6
- 7
- 8
- 9
- 10 (Least Deprived Decile)

NOTES

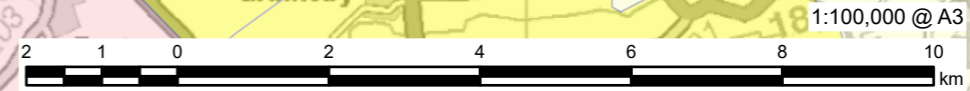
Published using the Open Government License (OGL) version 3.0. Reproduced from Ordnance Survey digital map data © Crown copyright 2023. All rights reserved. Licence number 0100031673.

ISSUE PURPOSE
 EIA Scoping Report

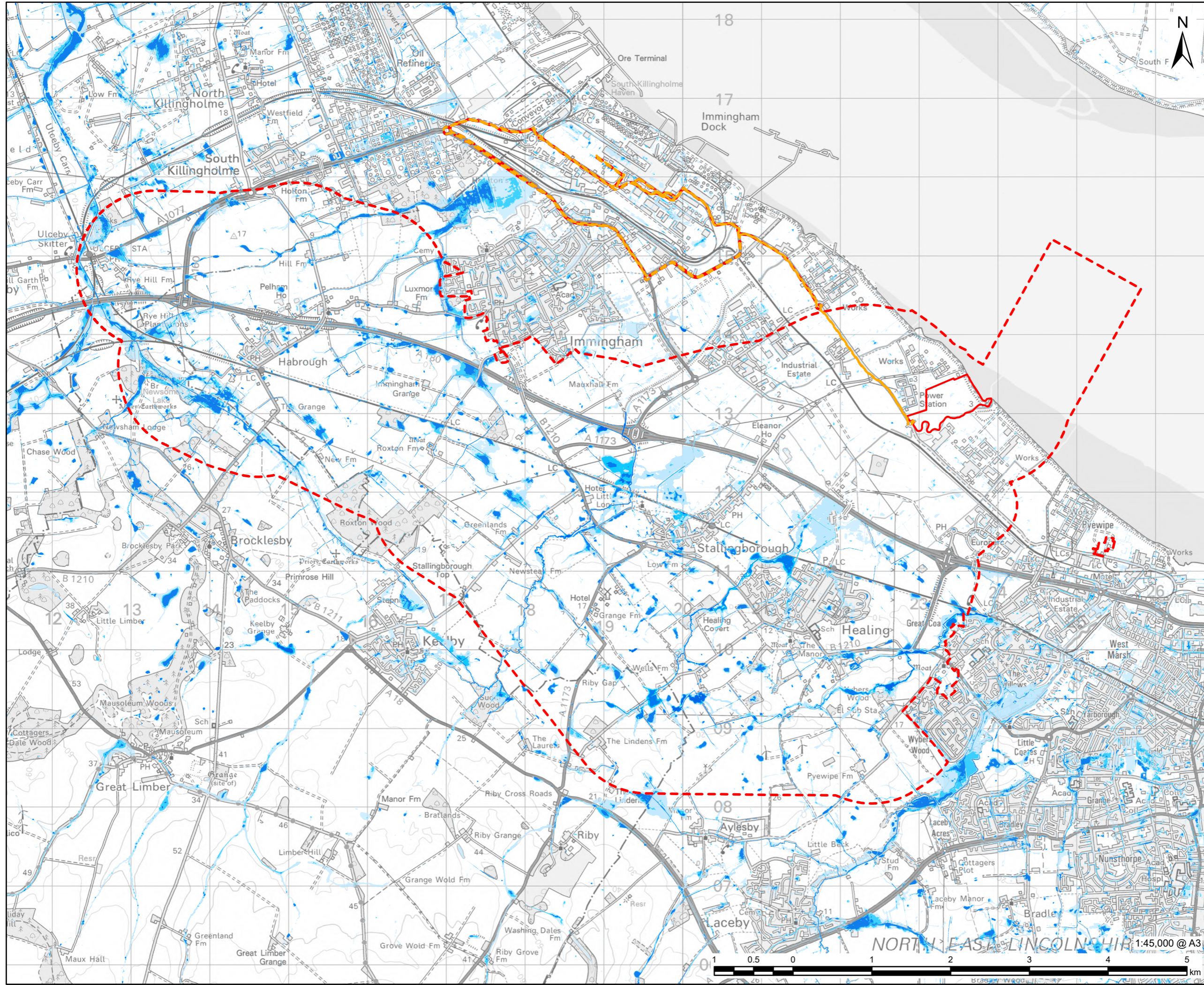
PROJECT NUMBER
 60714932

FIGURE TITLE
 Wider Impact Area Deprivation

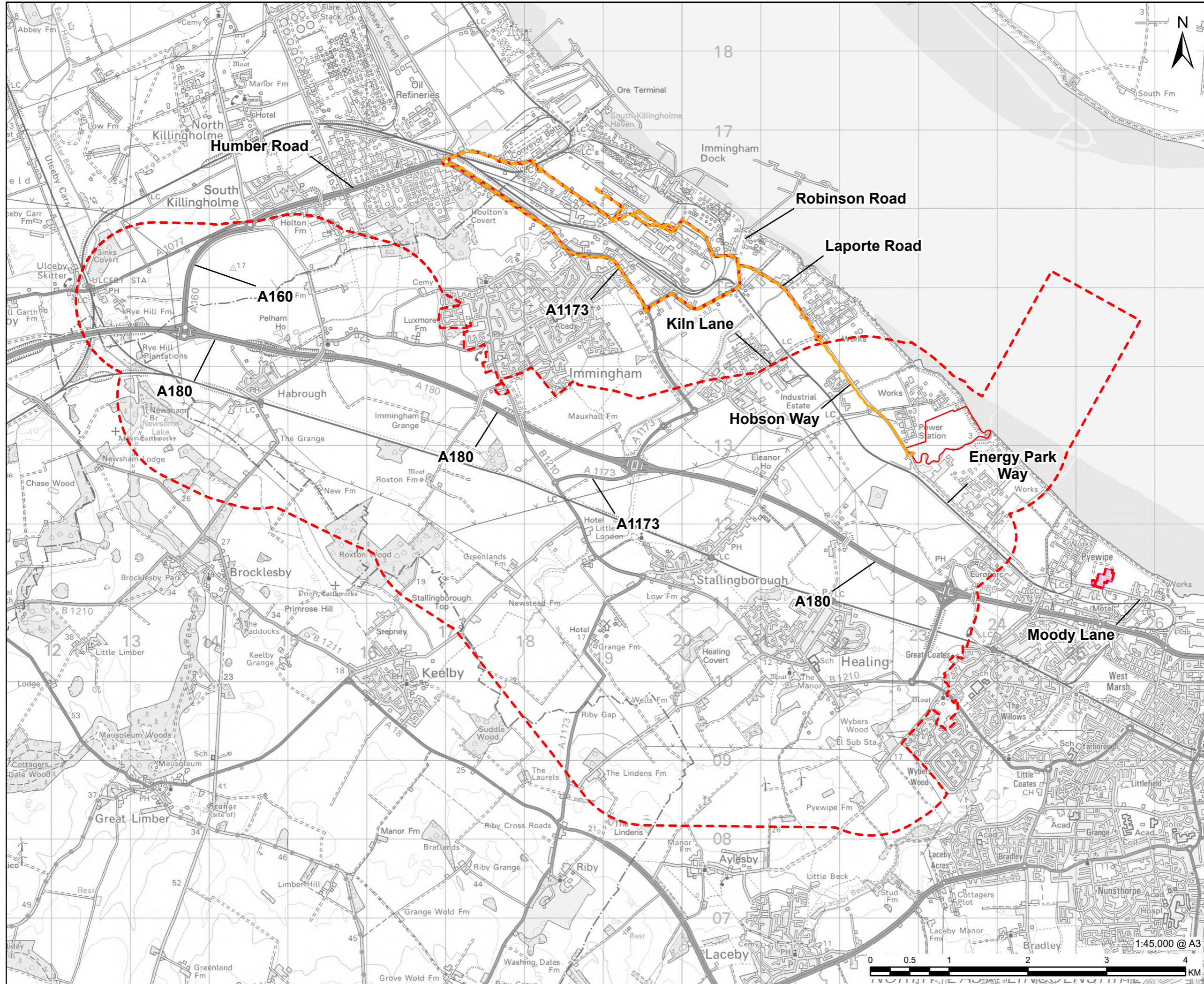
FIGURE NUMBER
 Figure 6B



This drawing has been prepared for the use of AECOM's client. It may not be used, modified, reproduced or relied upon by third parties, except as agreed by AECOM or as required by law. AECOM accepts no responsibility, and denies any liability whatsoever, to any party that uses or relies on this drawing without AECOM's express written consent. Do not scale this document. All measurements must be obtained from the stated dimensions.



This drawing has been prepared for the use of AECOM's client. It may not be used, modified, reproduced or relied upon by third parties, except as agreed by AECOM or as required by law. AECOM accepts no responsibility, and denies any liability whatsoever, to any party that uses or relies on this drawing without AECOM's express written consent. Do not scale this document. All measurements must be obtained from the stated dimensions.



AECOM
 PROJECT
 Stallingborough CCGT
 CCP Project

CLIENT
RWE

CONSULTANT
 AECOM Limited
 100 Embankment
 Cathedral Approach
 Manchester, M3 7FB
 www.aecom.com

- LEGEND
- The Site
 - Transport Route From the Port of Immingham
 - Main Site
 - Off-Site Potential Laydown Area

NOTES
 Reproduced from Ordnance Survey digital map data © Crown copyright 2023. All rights reserved. Licence number 0100031673.

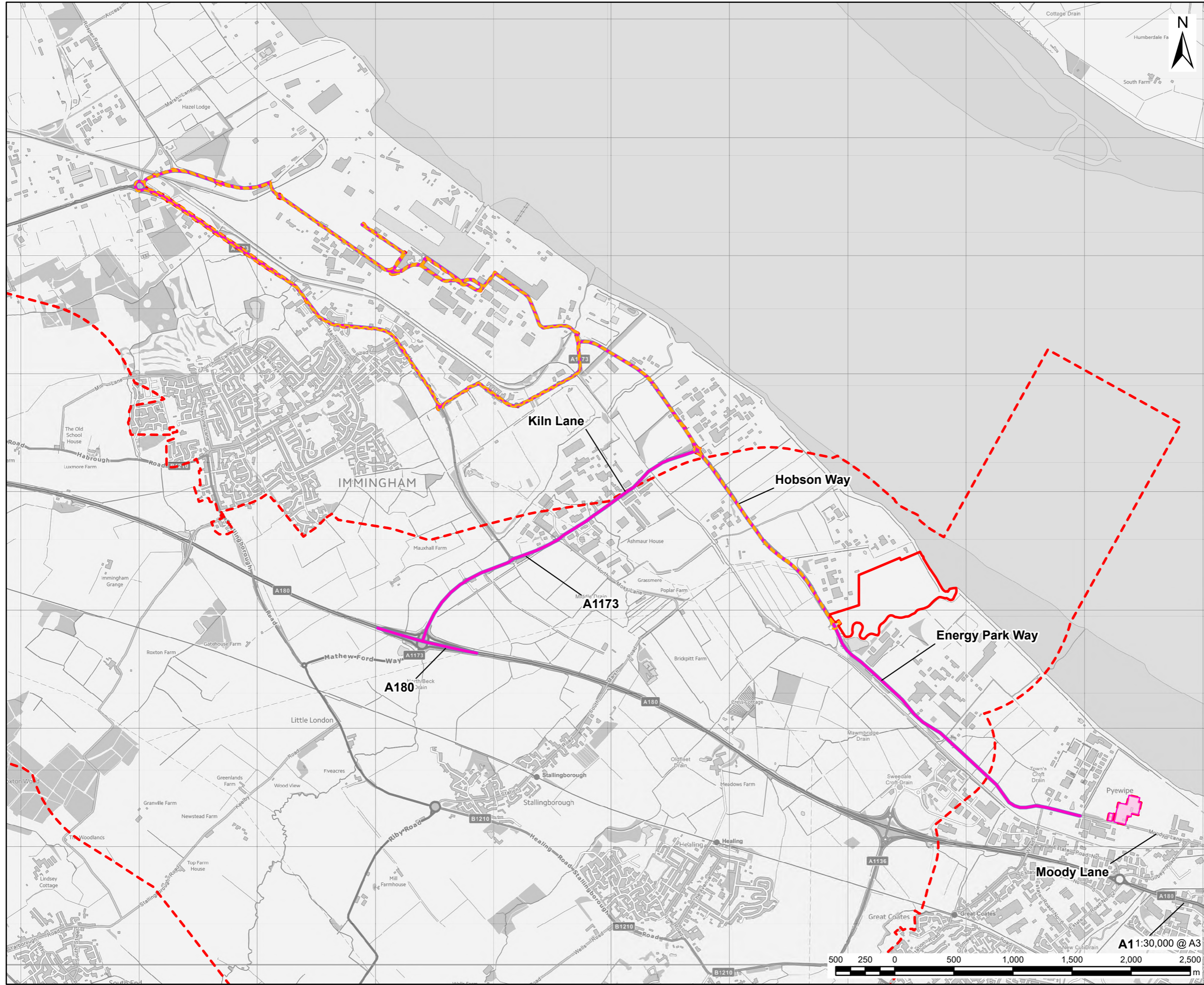
ISSUE PURPOSE
 EIA Scoping Report

PROJECT NUMBER
 60714932

FIGURE TITLE
 Local Road Network

FIGURE NUMBER
 Figure 6D

This drawing has been prepared for the use of AECOM's client. It may not be used, modified, reproduced or relied upon by third parties, except as agreed by AECOM or as required by law. AECOM accepts no responsibility, and denies any liability whatsoever, to any party that uses or relies on this drawing without AECOM's express written consent. Do not scale this document. All measurements must be obtained from the stated dimensions.



AECOM
 PROJECT
**Stallingborough CCGT
 CCP Project**

CLIENT
RWE

CONSULTANT
 AECOM Limited
 100 Embankment
 Cathedral Approach
 Manchester, M3 7FB
 www.aecom.com

- LEGEND
- - - The Site
 - - - Transport Route From the Port of Immingham
 - Main Site
 - Potential HGV Routes between Main Site, Potential Off-Site Laydown Area and Immingham Port
 - Off-Site Potential Laydown Area

NOTES
 Contains Ordnance Survey Data © Crown Copyright and database right 2023.

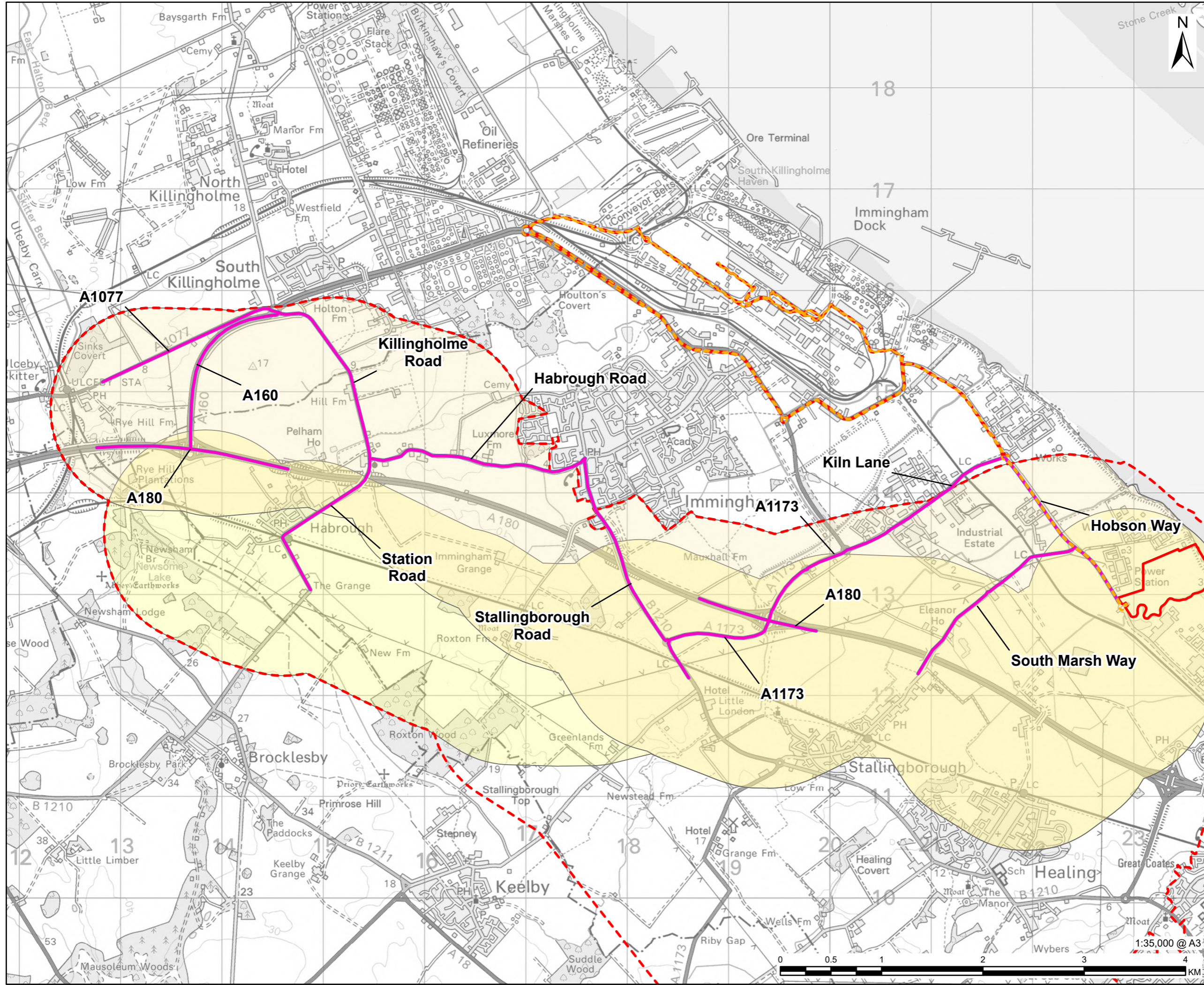
ISSUE PURPOSE
 EIA Scoping Report

PROJECT NUMBER
 60714932

FIGURE TITLE
 HGV Routing for the Main Site and Proposed Off-Site Laydown Area

FIGURE NUMBER
 Figure 6E

This drawing has been prepared for the use of AECOM's client. It may not be used, modified, reproduced or relied upon by third parties, except as agreed by AECOM or as required by law. AECOM accepts no responsibility, and denies any liability whatsoever, to any party that uses or relies on this drawing without AECOM's express written consent. Do not scale this document. All measurements must be obtained from the stated dimensions.



AECOM
 PROJECT
 Stallingborough CCGT
 CCP Project

CLIENT
RWE

CONSULTANT
 AECOM Limited
 100 Embankment
 Cathedral Approach
 Manchester, M3 7FB
 www.aecom.com

- LEGEND
- - - The Site
 - - - Transport Route From the Port of Immingham
 - Main Site
 - HGV Routes for the Proposed Gas Pipeline
 - Proposed Gas Pipeline Route Corridor A
 - Proposed Gas Pipeline Route Corridor B

NOTES

Contains Ordnance Survey Data © Crown Copyright and database right 2023.
 Reproduced from Ordnance Survey digital map data © Crown copyright 2023. All rights reserved. Licence number 0100031673.

ISSUE PURPOSE
 EIA Scoping Report

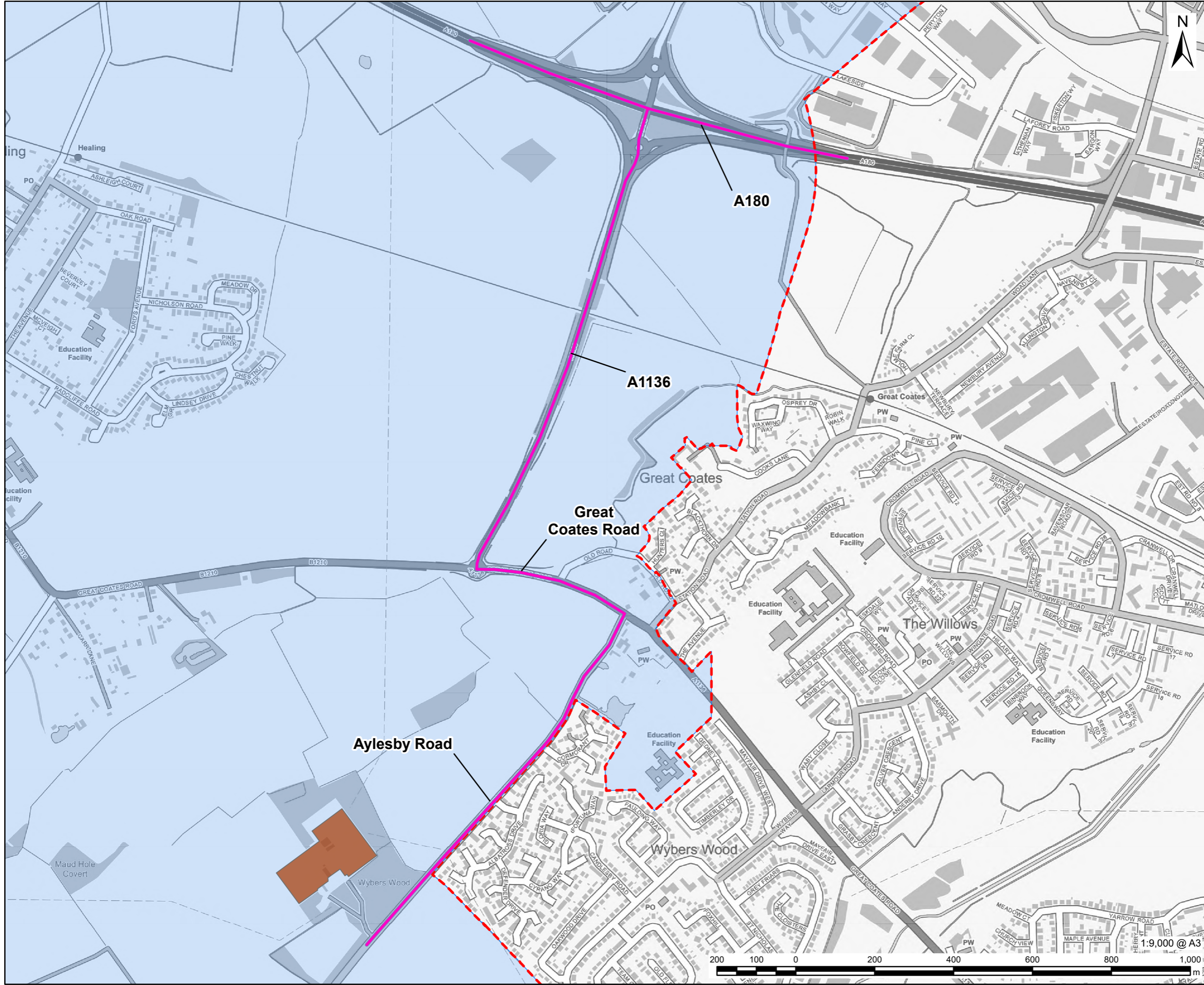
PROJECT NUMBER
 60714932

FIGURE TITLE
 HGV Routing for the Potential Gas Pipeline Installation

FIGURE NUMBER
 Figure 6F



This drawing has been prepared for the use of AECOM's client. It may not be used, modified, reproduced or relied upon by third parties, except as signed by AECOM or as required by law. AECOM accepts no responsibility, and denies any liability whatsoever, to any party that uses or relies on this drawing without AECOM's express written consent. Do not scale this document. All measurements must be obtained from the stated dimensions.



AECOM
 PROJECT
 Stallingborough CCGT
 CCP Project

CLIENT
RWE

CONSULTANT
 AECOM Limited
 100 Embankment
 Cathedral Approach
 Manchester, M3 7FB
 www.aecom.com

- LEGEND
- - - The Site
 - HGV Routes for the Potential Electrical Grid Connection Installation
 - Existing National Grid Grimsby West Substation
 - Proposed Electrical Grid Connection Route Corridor

NOTES

© National Grid UK
 Contains Ordnance Survey Data ©
 Crown Copyright and database right
 2023.

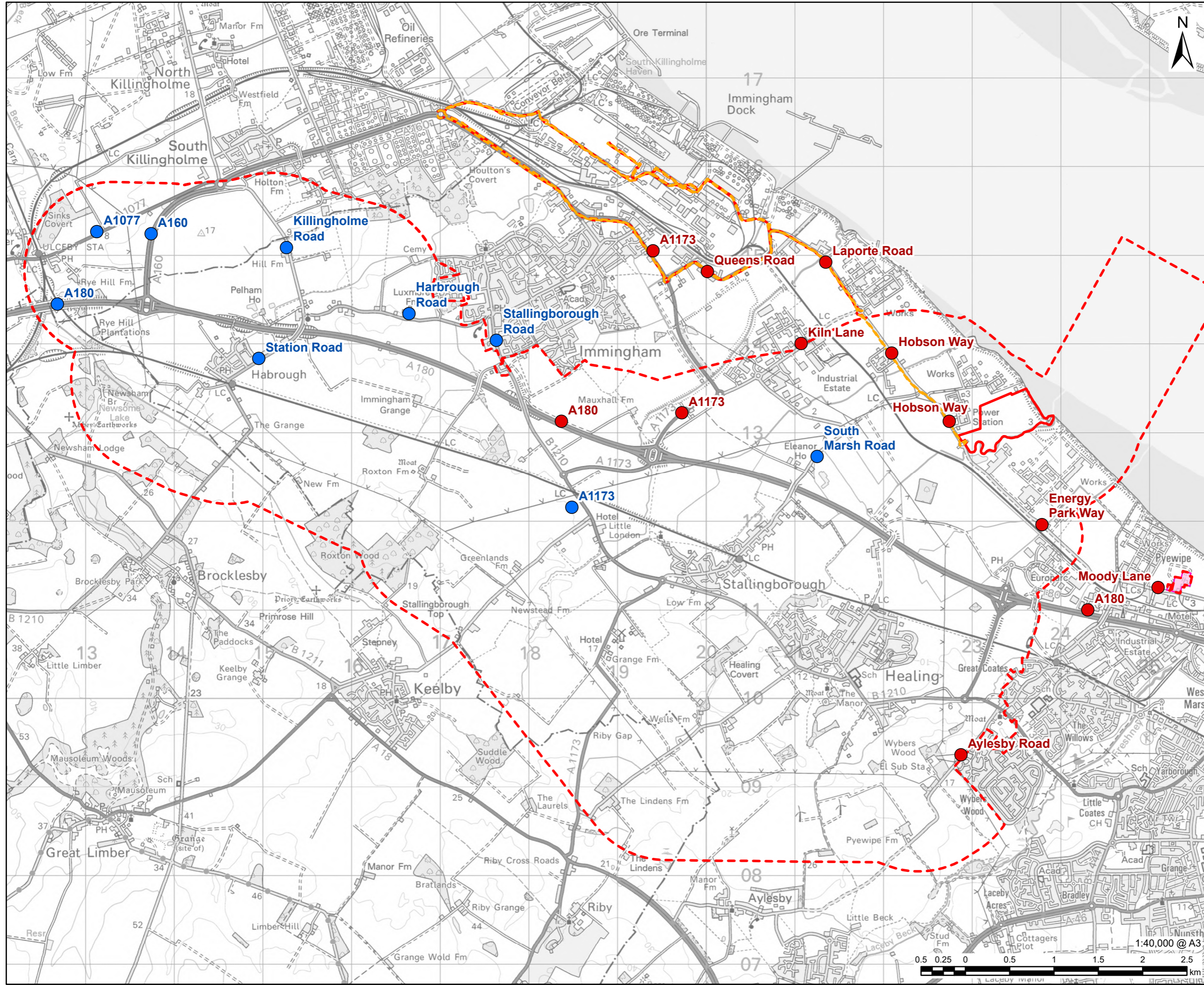
ISSUE PURPOSE
 EIA Scoping Report

PROJECT NUMBER
 60714932

FIGURE TITLE
 HGV Routing for the Potential Electrical
 Grid Connection Installation

FIGURE NUMBER
 Figure 6G

This drawing has been prepared for the use of AECOM's client. It may not be used, modified, reproduced or relied upon by third parties, except as agreed by AECOM or as required by law. AECOM accepts no responsibility, and denies any liability whatsoever, to any party that uses or relies on this drawing without AECOM's express written consent. Do not scale this document. All measurements must be obtained from the stated dimensions.



AECOM
 PROJECT
 Stallingborough CCGT
 CCP Project

CLIENT
RWE

CONSULTANT
 AECOM Limited
 100 Embankment
 Cathedral Approach
 Manchester, M3 7FB
 www.aecom.com

- LEGEND
- The Site
 - Transport Route From the Port of Immingham
 - Main Site
 - Automatic Traffic Count Location
 - Proposed ATCs for Main Site and Electrical Grid Connection Access
 - Gas Pipeline Access
 - Off-Site Potential Laydown Area

NOTES
 Reproduced from Ordnance Survey digital map data © Crown copyright 2023. All rights reserved. Licence number 0100031673.

ISSUE PURPOSE
 EIA Scoping Report

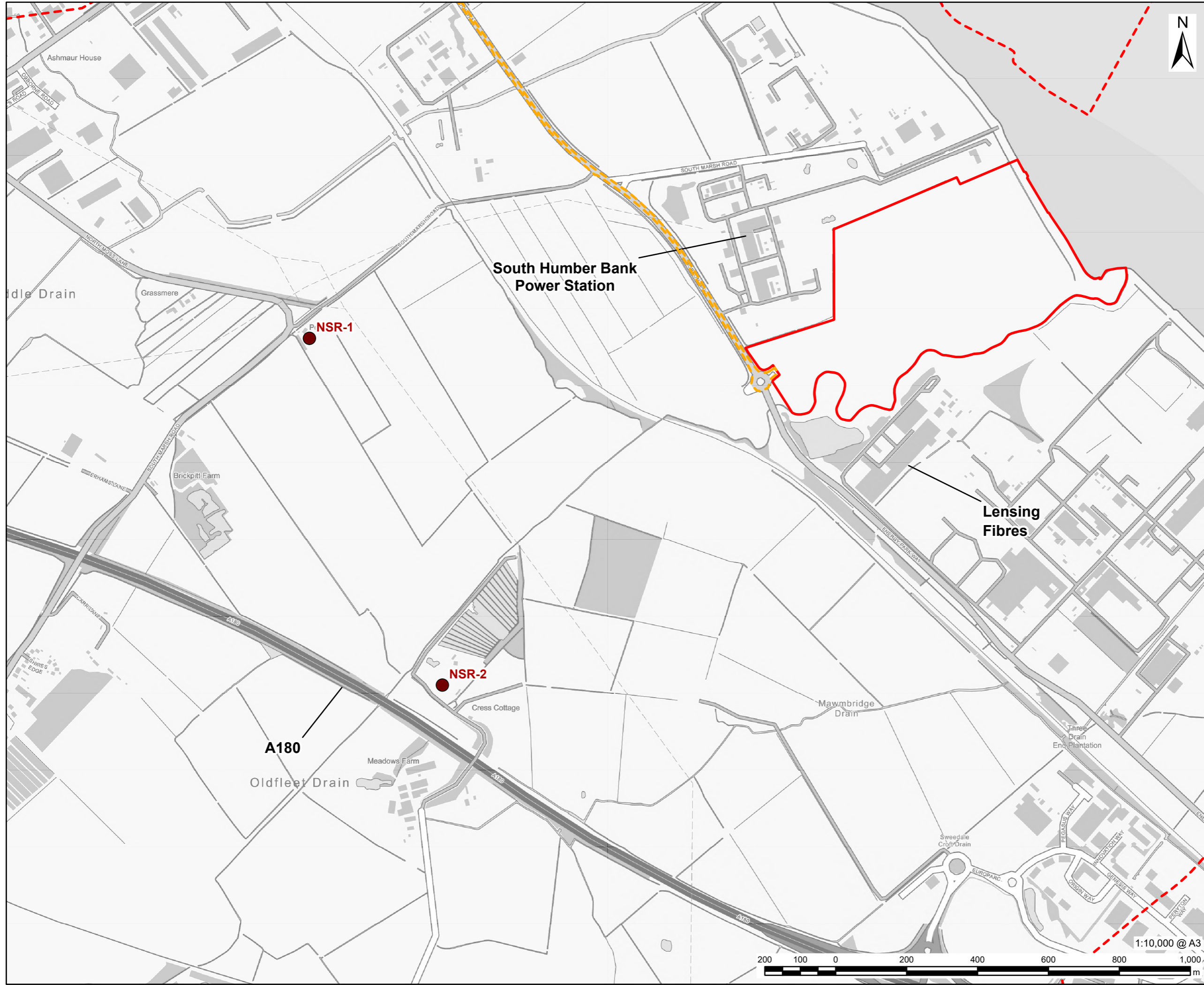
PROJECT NUMBER
 60714932

FIGURE TITLE
 Proposed Automatic Traffic Count Locations

FIGURE NUMBER
 Figure 6H



This drawing has been prepared for the use of AECOM's client. It may not be used, modified, reproduced or relied upon by third parties, except as agreed by AECOM or as required by law. AECOM accepts no responsibility, and denies any liability whatsoever, to any party that uses or relies on this drawing without AECOM's express written consent. Do not scale this document. All measurements must be obtained from the stated dimensions.



AECOM

PROJECT
Stallingborough CCGT
CCP Project

CLIENT
RWE

CONSULTANT
AECOM Limited
100 Embankment
Cathedral Approach
Manchester, M3 7FB
www.aecom.com

- LEGEND
- - - The Site
 - - - Transport Route From the Port of Immingham
 - ▭ Main Site
 - Noise Sensitive Human Receptor

NOTES
Reproduced from Ordnance Survey digital map data © Crown copyright 2023. All rights reserved. Licence number 0100031673.

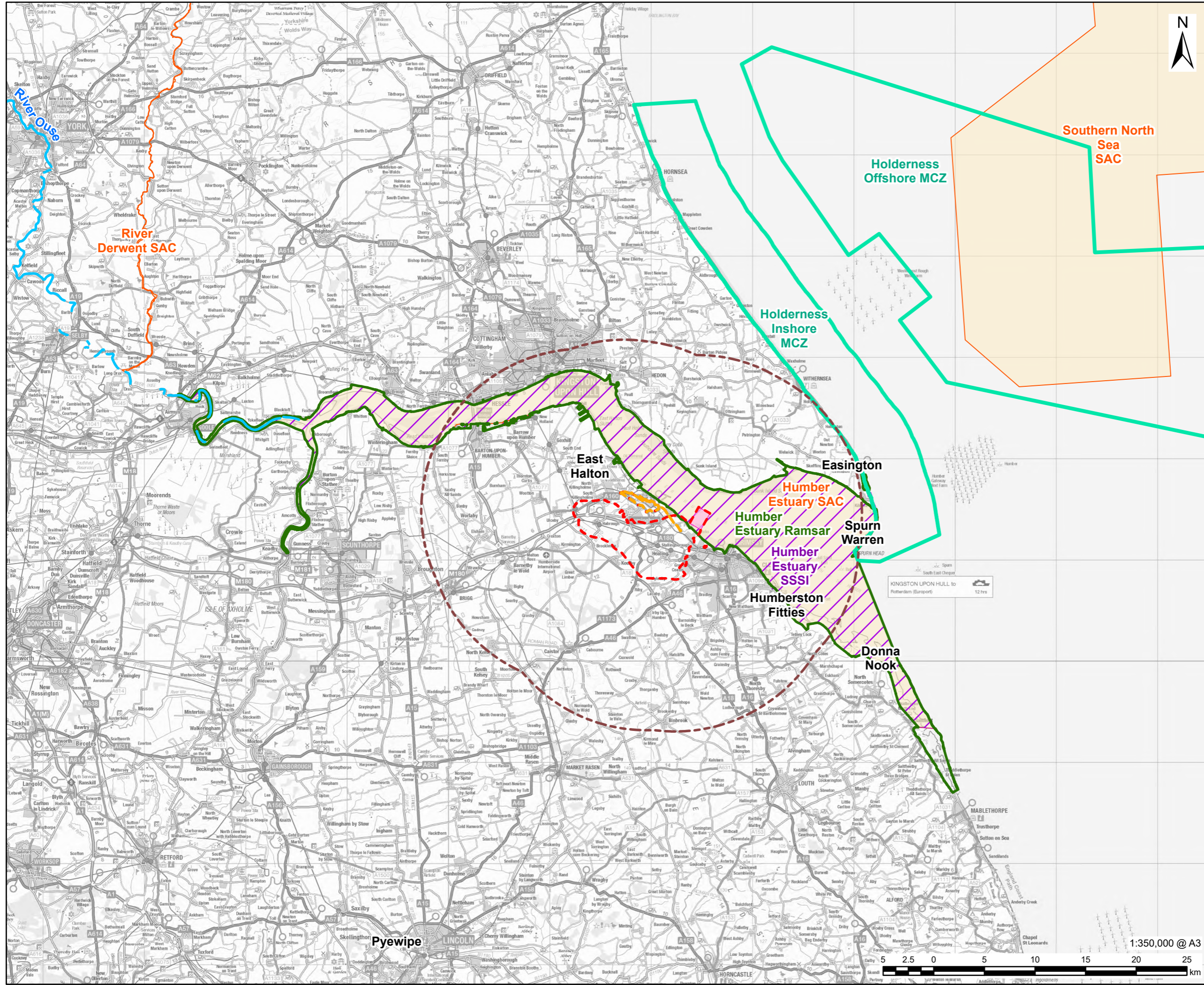
ISSUE PURPOSE
EIA Scoping Report

PROJECT NUMBER
60714932

FIGURE TITLE
Noise Sensitive Human Receptors around the Main Site

FIGURE NUMBER
Figure 61

This drawing has been prepared for the use of AECOM's client. It may not be used, modified, reproduced or relied upon by third parties, except as agreed by AECOM or as required by law. AECOM accepts no responsibility, and denies any liability whatsoever, to any party that uses or relies on this drawing without AECOM's express written consent. Do not scale this document. All measurements must be obtained from the stated dimensions.



AECOM
 PROJECT
 Stallingborough CCGT
 CCP Project

CLIENT
RWE

CONSULTANT
 AECOM Limited
 100 Embankment
 Cathedral Approach
 Manchester, M3 7FB
 www.aecom.com

LEGEND

- The Site
- Transport Route From the Port of Immingham
- Potential Abstraction & Discharge Location Area
- 15km Study Area
- Watercourse
- Special Area of Conservation (SAC)
- Site of Special Scientific Interest (SSSI)
- Ramsar
- Marine Conservation Zone (MCZ)

NOTES

© Natural England copyright. Contains Ordnance Survey data © Crown copyright and database right 2023. Contains Ordnance Survey Data © Crown Copyright and database right 2023. Reproduced from Ordnance Survey digital map data © Crown copyright 2023. All rights reserved. Licence number 0100031673.

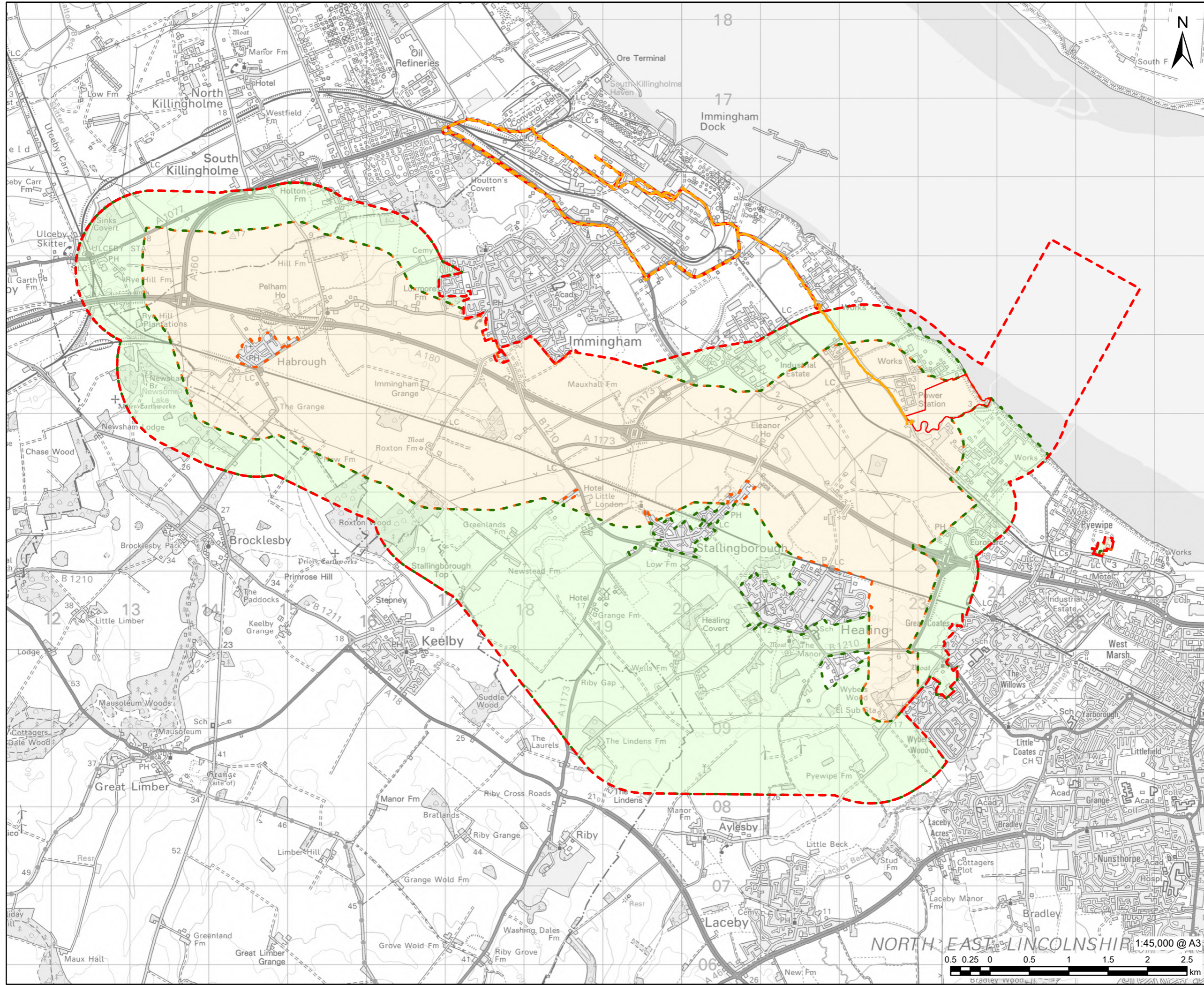
ISSUE PURPOSE
 EIA Scoping Report

PROJECT NUMBER
 60714932

FIGURE TITLE
 Marine Ecology Indicative Study Area and Designated Sites

FIGURE NUMBER
 Figure 6J

This drawing has been prepared for the use of AECOM's client. It may not be used, modified, reproduced or relied upon by third parties, except as agreed by AECOM or as required by law. AECOM accepts no responsibility, and denies any liability whatsoever, to any party that uses or relies on this drawing without AECOM's express written consent. Do not scale this document. All measurements must be obtained from the stated dimensions.



AECOM
 PROJECT
 Stallingborough CCGT
 CCP Project

CLIENT
RWE

CONSULTANT
 AECOM Limited
 100 Embankment
 Cathedral Approach
 Manchester, M3 7FB
 www.aecom.com

- LEGEND
- The Site
 - Transport Route From the Port of Immingham
 - Main Site
 - 2023 Terrestrial Ecology Study Area
 - Additional Terrestrial Ecology Study Area from November 2023

NOTES
 Reproduced from Ordnance Survey digital map data © Crown copyright 2023. All rights reserved. Licence number 0100031673.

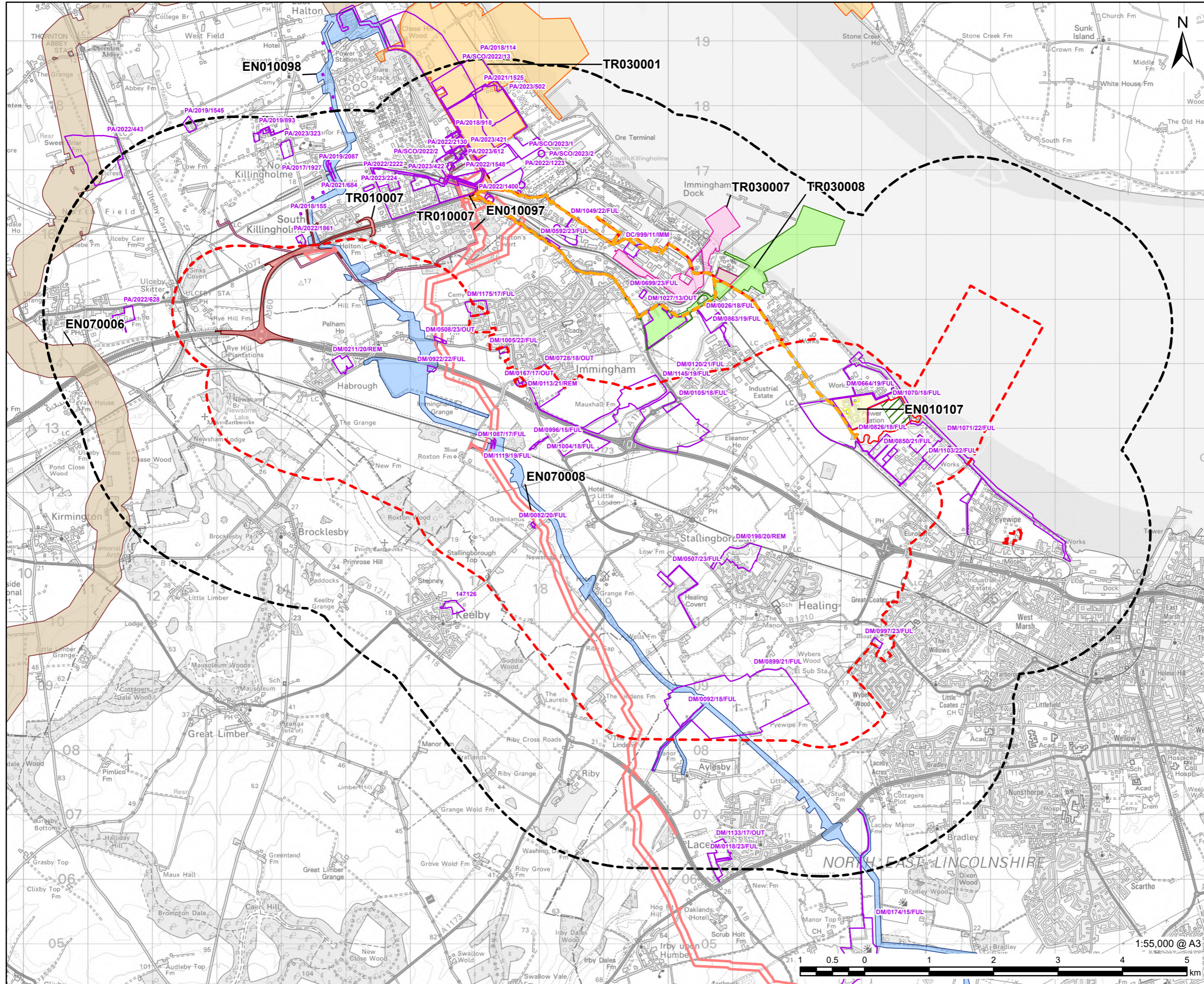
ISSUE PURPOSE
 EIA Scoping Report

PROJECT NUMBER
 60714932

FIGURE TITLE
 Terrestrial Ecology Survey Area

FIGURE NUMBER
 Figure 6K

This drawing has been prepared for the use of AECOM's client. It may not be used, modified, reproduced or relied upon by third parties, except as agreed by AECOM or as required by law. AECOM accepts no responsibility, and denies any liability whatsoever, to any party that uses or relies on this drawing without AECOM's express written consent. Do not scale this document. All measurements must be obtained from the stated dimensions.



AECOM

PROJECT
Stallingborough CCGT
CCP Project

CLIENT

RWE

CONSULTANT
AECOM Limited
100 Embankment
Cathedral Approach
Manchester, M3 7FB
www.aecom.com

- LEGEND**
- - - The Site
 - - - Transport Route From the Port of Immingham
 - 2km Study Area
 - Main Site
 - Strategic Mitigation Site
 - Planning Application
 - DCO Application**
 - A160-A180 Port of Immingham Improvement (TR010007)
 - ABLE Marine Energy Park (TR030001)
 - Hornsea Project Four Offshore Wind Farm (Generation Stations) (EN010098)
 - Humber Low Carbon Pipelines (EN070006)
 - Immingham Eastern Ro-Ro Terminal (TR030007)
 - Immingham Green Energy Terminal (TR030008)
 - South Humber Bank Energy Centre (EN010107)
 - VPI Immingham OCGT (EN010097)
 - Viking CCS Pipeline (EN070008)

NOTES
Reproduced from Ordnance Survey digital map data © Crown copyright 2023. All rights reserved. Licence number 0100031673.

ISSUE PURPOSE
EIA Scoping Report

PROJECT NUMBER
60714932

FIGURE TITLE
Other Developments to be Considered in Cumulative Impact Assessment

FIGURE NUMBER
Figure 8A

This drawing has been prepared for the use of AECOM's client. It may not be used, modified, reproduced or relied upon by third parties, except as agreed by AECOM or as required by law. AECOM accepts no responsibility, and denies any liability, for any party that uses or relies on this drawing without AECOM's express written consent. Do not scale this document. All measurements must be obtained from the stated dimensions.

10.13.1